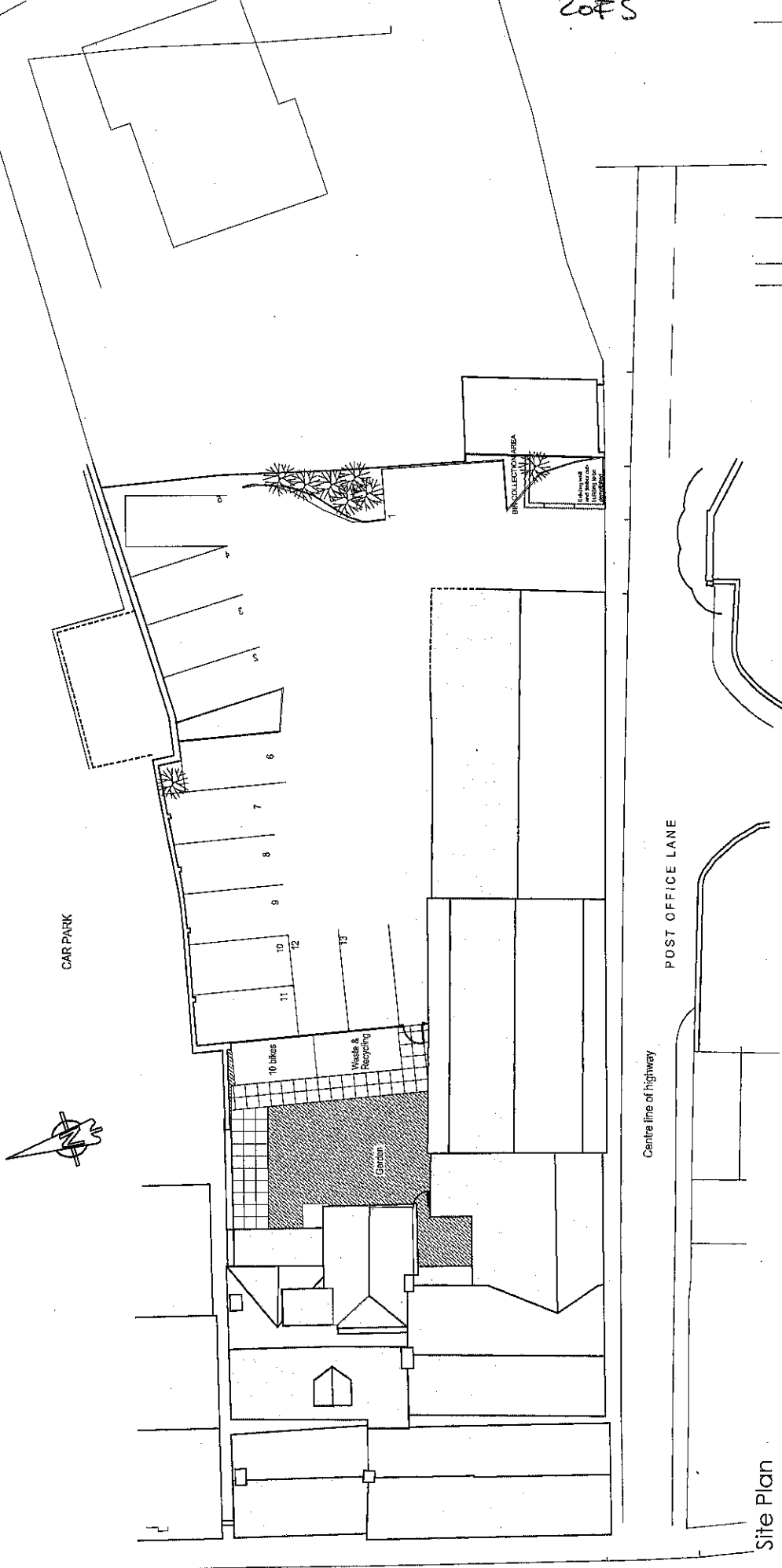




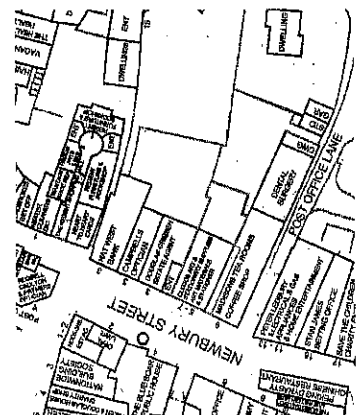
P13/V1442/FUL

APP 1

2015



Site Plan  
1:200

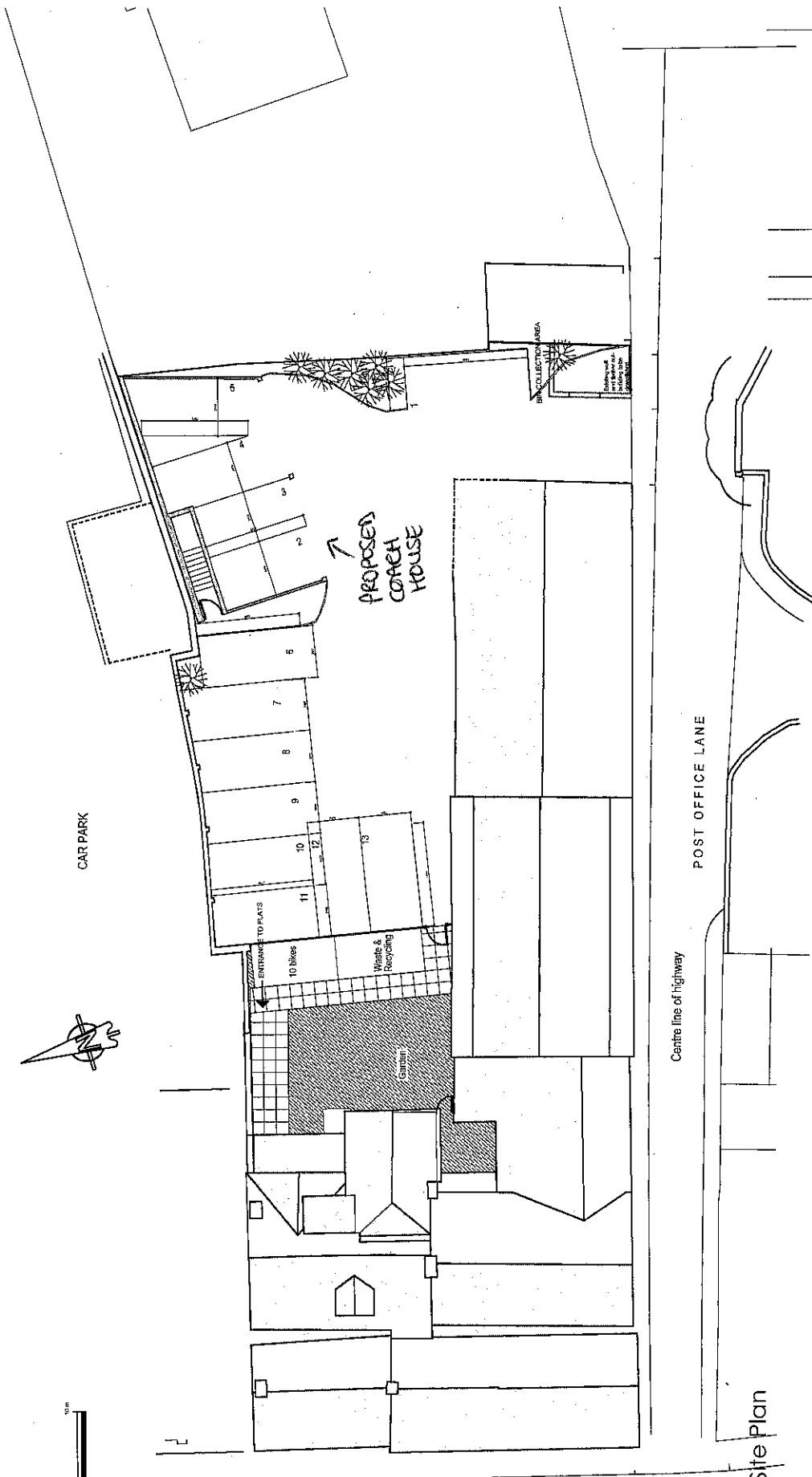


Proposed Site Location Plan  
1:1250

Rev	Date	Description	Rev By	CHK'd by
This Drawing is Copyright and may not be reproduced without permission. Do not scale off this drawing.				
Project Title			DEVELOPMENT OF 5 & 7 NEWBURY STREET	
Client			WANTAGE COXON	
Status			Mr Manvir Patel	
Scale/Drawn Size			1: 200/ 1:1250	
Date			June 2013	
Drawn by			RN	
Checked by			AMA	
CAD file reference			1D980A17D	
Drawing Title			SITE AND LOCATION PLANS	
Job No. - Draw No.			10980 210	
Revision			1	
<p>THE HARRIS PARTNERSHIP MANCHESTER                  L: 01752 271 820 F: 01752 270 072                  THE HARRIS PARTNERSHIP MANCHESTER                  L: 0141 220 8005 F: 0141 244 5007                  THE HARRIS PARTNERSHIP MANCHESTER                  101 London Road, Bradford, BS1 8BY                  T: 0115 959 7760 F: 0115 958 6872                  www.harrispartnership.com</p>				



P13/V1442/RUL APP1 30FS



Proposed Site Plan  
1:200

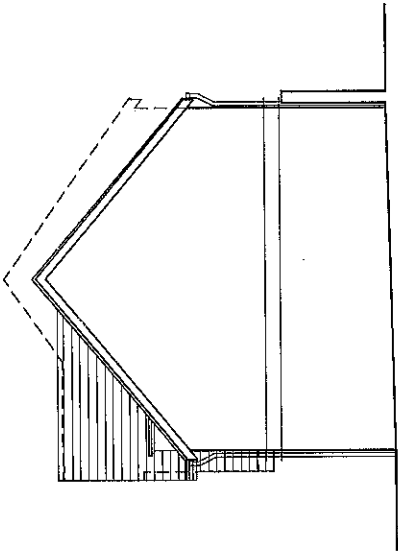
Rev	Date	Description	By	Check By
A	26.10.12	Building orientation corrected	RL	AMA

This drawing is Copyright and may not be reproduced without permission. Do not scale off this drawing.

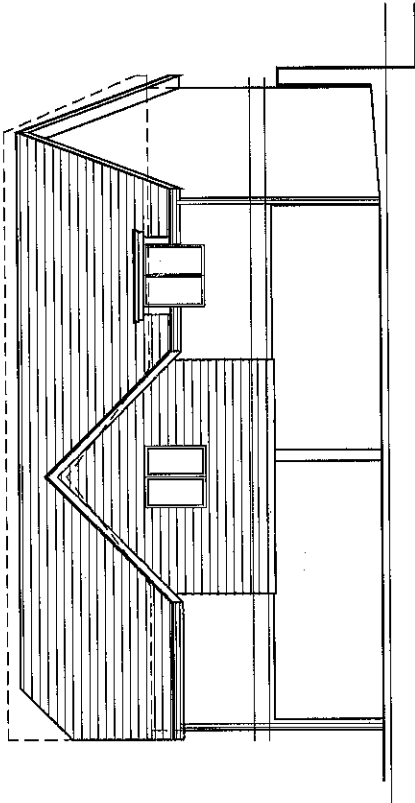
Project Title	DEVELOPMENT OF 5 & 7 Newbury street WANTAGE OXON		
Client	Mr Menzies Hotel		
Status	Planning		
Scale/Drawing Size	1:200/ 11250	A3	
Date	June 2013		
Drawn By	RN		
Checked By	AMA		
CAD file reference	10980\17.D		
Drawing Title	SITE AND LOCATION PLANS		
Job No. - Dep No.	10980 212		
Revision			

THE HARRIS PARTNERSHIP ARCHITECTS  
 25, JOHNSTON, WOODSLEY, WILT 20A  
 T. 01929 291800 F. 01929 290022  
 THE HARRIS PARTNERSHIP ARCHITECTS  
 1, OMA 238,635 T. 014 242 5967  
 THE HARRIS PARTNERSHIP ARCHITECTS  
 1, OMA 211 277 T. 01928 211 722  
 THE HARRIS PARTNERSHIP ARCHITECTS  
 1, OMA 259 7700 T. 0118 928 8482  
[www.harrispartnership.com](http://www.harrispartnership.com)

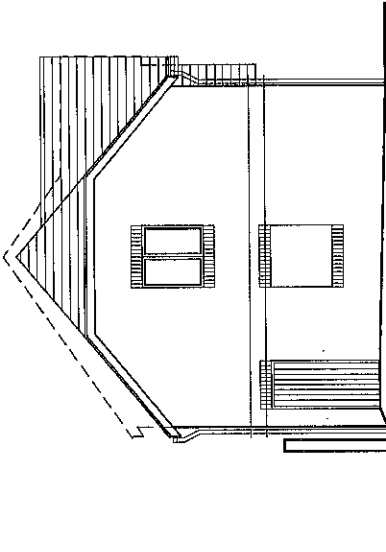




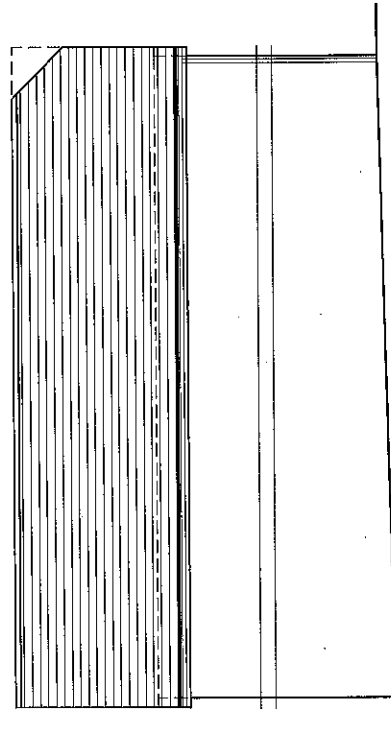
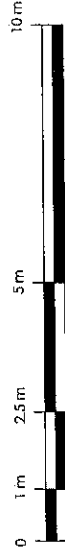
Proposed Side Elevation  
1:100



Proposed Front Elevation  
1:100



Proposed Side Elevation  
1:100



Proposed Rear Elevation  
1:100

Project Title	DEVELOPMENT OF 5 & 7 Newbury street WANTAGE OXON	
Client	Mr Manvir Patel	
Status	Planning	
Scale/Drawing Size	1:100	A3
Date	June 2013	
Drawn By	RN	
Checked By	AMA	
CAD file reference	10980\17.D	
Planning Title	PROPOSED ELEVATIONS (COACH HOUSE)	
Job No. - Draw No.	10980 214	
Revision	A	
A. Rev 0/13	Good plan received to all interested parties	
Drawn	RN	
Checked	AMA	
This drawing is copyright and may not be reproduced without permission. On the side of the drawing.		
<p>THE HARRIS PARTNERSHIP ARCHITECTS</p> <p>23, Ashby Road, Wantage, Oxon, OX12 9JF          T: 01845 71800 F: 01845 71801          18 Moor Close, Wantage, Oxon, OX12 9JF          T: 01845 71800 F: 01845 71801          The Coach House, 72 High Street, Wantage, Oxon, OX12 9JF          T: 01845 71800 F: 01845 71801          www.harrispartnership.com</p>		